



Assembly and Installation Instructions for Model's

50014/150DW

CAUTION - RISK OF FIRE

Installation of this fixture should be done by a licensed electrician or by a person familiar with local electrical codes and the construction and operation of this fixture.

Warning please make sure the electrical breaker is shut off before commencing with this installation

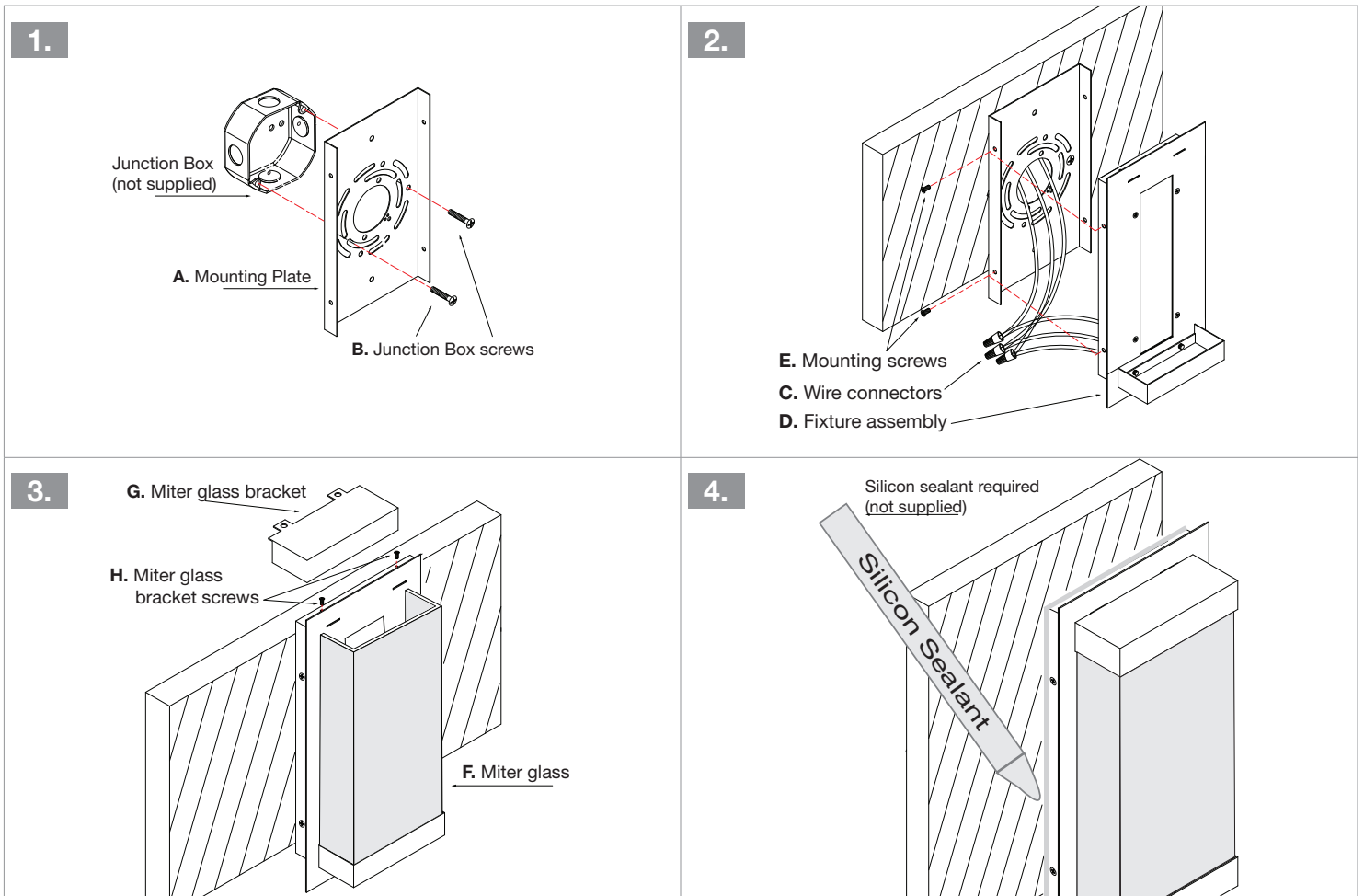
This fixture is certified for wall mounting only and is suitable for Wet locations

Package Contents

Part	Description	Qty	Part	Description	Qty
A	Mounting plate	1	B	Junction-Box mounting screws	2
C	Wire connectors	3	D	Fixture assembly	1
E	Fixture mounting screws	4	F	Miter glass	1
G	Miter glass bracket	1	H	Miter glass bracket screws	2

Important note

Suitable outdoor Silicon Sealant is required to ensure that the electrical connections are adequately protected



Installing the fixture *please ensure the electrical breaker is switched off before commencing*

- 1 Attach and **center** the Mounting plate (**A**) to the Junction box with supplied Junction-Box mounting screws (**B**).
- 2 Connect the Supply wires to the Fixture wires using the supplied Electrical wire connectors (**C**). White supply wire to the White fixture wire, Black supply wire to Black fixture wire and the ground Bare Copper or Green wire to the Green fixture wire. Once the Electrical wire connectors are securely fastened it is recommended to tape these connectors with electrical tape. Attach the Fixture assembly (**D**) to the Mounting bracket with supplied Mounting screws (**E**).
- 3 Insert the Miter glass (**F**) into the bottom of the fixture assembly (**D**) attach the Miter glass bracket (**G**) and secure with supplied Miter glass bracket screws (**H**).
- 4 Caulk all the edges with a suitable outdoor rated Silicon Sealant and reconnect the electrical breaker and the fixture is ready for use.

